

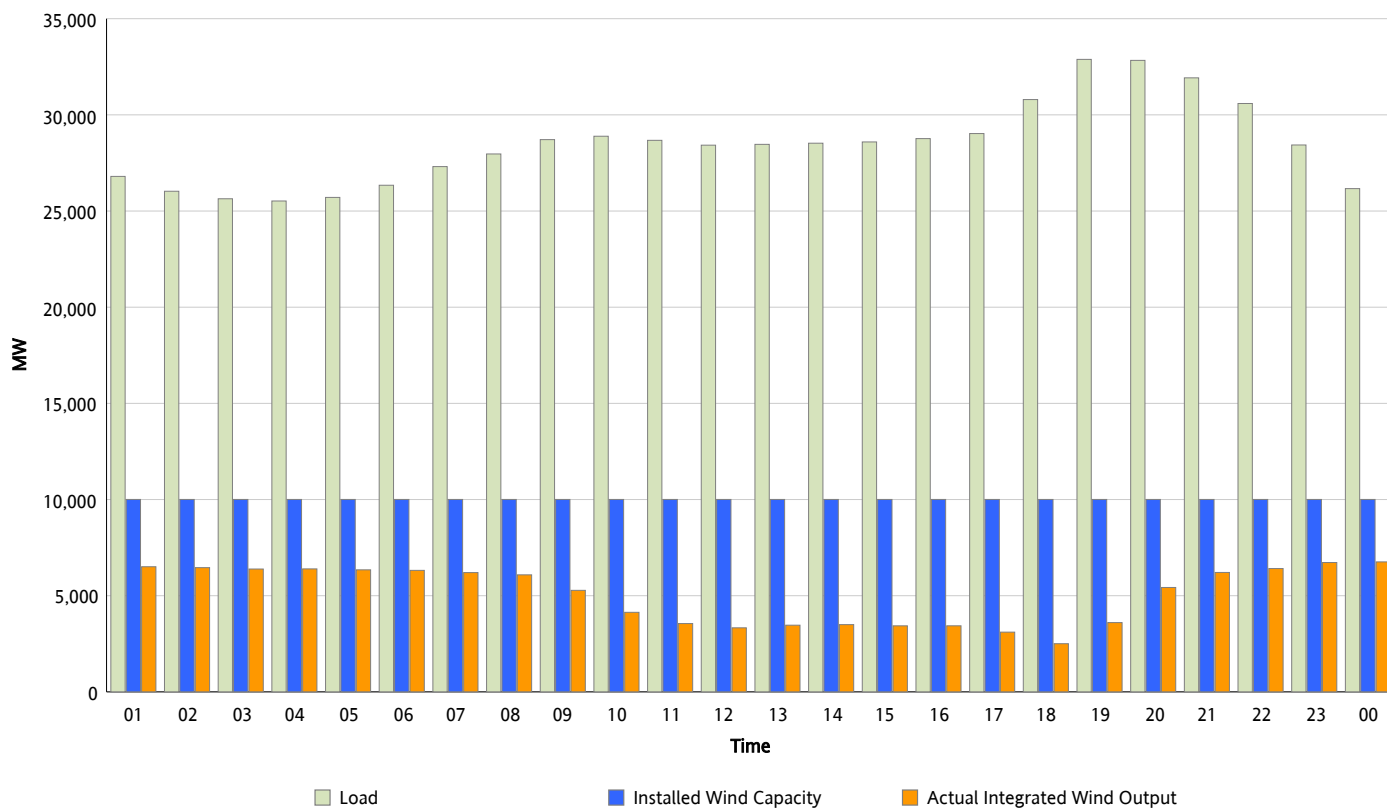


ERCOT Grid Operations

Wind Integration Report : 11/25/2012

Peak Load	32,885 MW
Load Peak Hour (HE)	19
Wind Over Peak	3,603 MW
Wind Record 11/10/12	8,521 MW
Max Wind Value*	6,978 MW
Wind Peak Time	23:01
Wind Integration %	25.65 %

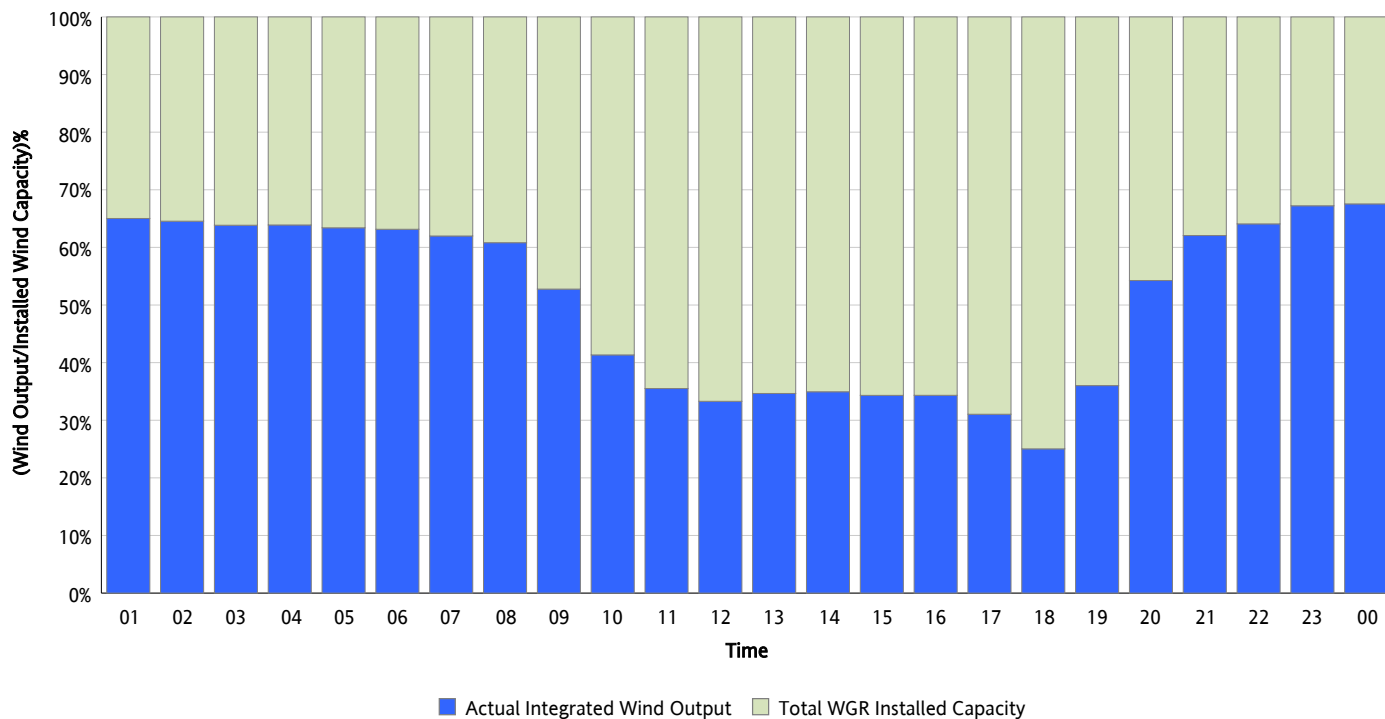
Hourly Average Actual Load vs. Actual Wind Output
11/25/2012



** Wind Record and Wind Max represent instantaneous values and the rest of the values are integrated over the hour*

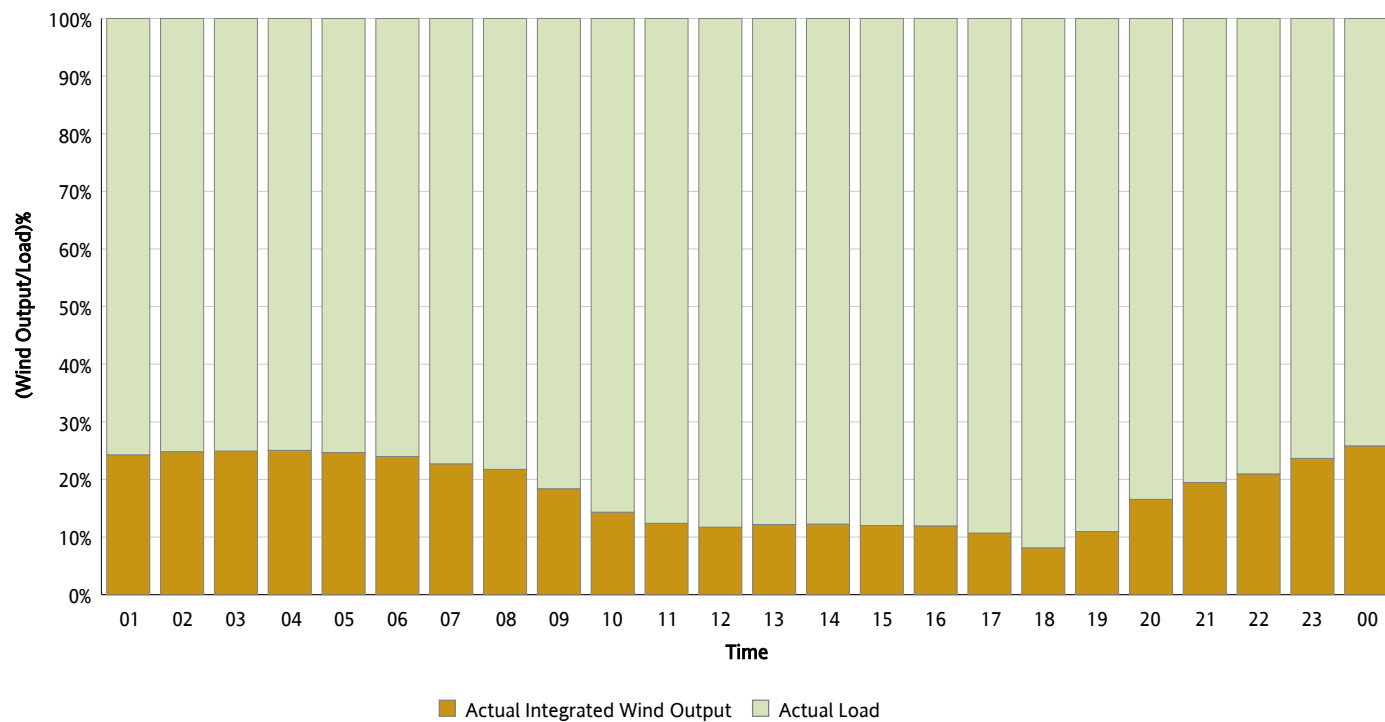
Actual Wind Output as a Percentage of the Total Installed Wind Capacity

11/25/2012



Actual Wind Output as a Percentage of the ERCOT Load

11/25/2012



ERCOT Load vs. Actual Wind Output

11/18/2012 - 11/25/2012

